



LHS Litherland
High School

**KS4 Curriculum and
Options Information
2025**



Introduction

You are entering a new and exciting phase in your education as you start to take responsibility for choosing your GCSE options. Year 10 and 11 are an incredibly important stage in your school life as you prepare for, and take, your GCSE and Vocational Key Stage 4 courses such as BTECs. This information booklet gives you a balanced overview of the options available and will help you make choices around your interests and aspirations.

You should start by considering the kind of careers that appeal to you most. This is your chance to take an honest look at your strengths, skills and personal qualities. You may not know exactly what you want to do in your future, so it is important to choose a broad and balanced combination of subjects. You will receive a great deal of help from your subject teachers, form tutors and you will receive a one-to-one appointment with a member of the Senior Leader Team who will guide you through this process.

I know this process can be daunting, but sincerely hope you enjoy taking this important step in your education. I am confident that, if you display the right attitude to learning and have high aspirations, you will flourish at Key Stage 4 and leave Litherland High School with results that you can be proud of and will provide the foundations for your future career.

Mrs Hallwood
Principal



The KS4 Curriculum

The curriculum at KS4 is made up of two elements, the **core curriculum** and the **guided choice curriculum (options)**.

The **core curriculum** includes the compulsory subjects such as GCSE English, mathematics and science. It also includes non-examination subjects which are; religious studies (please note this is also available as a GCSE within options subjects), physical education, citizenship, careers and PSHE.

The remaining subjects are referred to as **guided choices** and are chosen following extensive consultation between students, teachers, members of the Senior Leadership Team and parents/carers. The intention is to make sure subjects chosen most accurately complement students' talents, interests and aspirations.

Pupils who wish to take triple science will need to have demonstrated they have excelled in KS3 science and shown a commitment to learning. Teachers will assess students' suitability to follow this course and advise accordingly.

All courses at KS4 require a serious commitment to study. It is very important you keep up to date with all deadlines and excellent attendance is essential to avoid missing important work. Some subjects may also require attendance of extra-curricular time after school such as art, photography, music and performing arts, therefore a high level of engagement is essential.

We always aim to provide students with their first choices, however if there are insufficient numbers, a course may not run. Physical resources and safety requirements may also result in limited numbers available of some subjects such as design and technology, catering and photography. If this is the case, pupils will be selected based on their prior attitude and performance in a subject as well as their attendance. Students will be asked to choose a back up subject for each option column and if their first choices are not available, they will discuss their suitable reserve choice with a member of SLT.



Core GCSE subjects

English Language
English Literature
Mathematics
Combined Science

Guided Choice subjects

Art and Design
Business Studies
Child Development
Computer Science
Design and Technology
Geography
Health and Social Care
History
Hospitality and Catering
Music
Performing Arts
Photography
Religious Studies
Separate Sciences
Spanish
Sports and Coaching

Timeline

16th
January

Options Evening and
booklets issued to
students

20th
January

Initial preferences given on
Microsoft Forms

31st
January

Option blocks released,
students issued with final
choice Microsoft Form link

6th
February

Year 9 Parents' Evening

14th
February

Deadline for completion of
final choices

7th
March

One to one student meetings
with a member of SLT
completed

4th
April

Allocation of subjects
confirmed with students.

Frequently Asked Questions

1. Do I have free choice over my options? NO - We will look carefully at your choices with you and discuss the suitability of these courses. This is why we are referring to them as 'Guided Choices'. We want to ensure you will be motivated and not feel overwhelmed so you can maximise your potential for the future.

2. Will I get all of my choices? PROBABLY. Most students do get their first choices, however, if there are insufficient numbers the course may not run. Some combinations of subjects may not work on the timetable and if a subject is over subscribed, we will look closely at behaviour and attendance information.

3. Will I have the same teachers I have had in year 9? NOT NECESSARILY. The timetable will be very different in KS4 and you may have a teacher who has previously taught you or you may have a different one. Do not choose a subject based on the fact that you like or dislike your current teacher.

4. Will I be in the same classes as my friends? NOT NECESSARILY. Even if you choose the same subjects in the same columns this does not guarantee you will be with your friends. Do not choose subjects based on what your friends are choosing.

5. Will I be able to change my options once I have chosen? POSSIBLY. However, it is really important to think about your choices very carefully as it may be difficult to find places once subject choices have been allocated. For example a swap to Photography would be highly unlikely due to class sizes usually being full by the start of year 10. Once you start the course in September 2025, if you believe you have made the wrong choice you would need to speak to Mrs Hallwood.

6. When will I find out if I have a place in my chosen options? APRIL 4th. We are aiming for the choices to be finalised by this date.

GCSEs and Vocational Courses

At LHS we offer both GCSEs and Vocational courses at KS4. Vocational courses such as BTECs are worth the equivalent of one GCSE each. These courses often have the advantage of a coursework element as well as an examination. They are graded slightly differently to the numerical grades used for GCSEs and students achieve a grade such as a 'Level Two Pass', this grade is the equivalent to a grade 4 at GCSE. See the information below for what the equivalent grades are.

Vocational Grade:

Level Two Distinction *
Level Two Distinction
Level Two Merit
Level Two Pass
Level One Distinction
Level One Merit
Level One Pass

Equivalent to GCSE grade:

8.5
7
5.5
4
3
2
1.25

Vocational Courses at LHS

BTEC Child Development
BTEC Health and Social Care
BTEC Performing Arts
BTEC Music
WJEC Level 1/2 Hospitality and Catering
WJEC Level 1/2 Sports and Coaching

GCSE English Language

Exam Board: EDUQAS

English Language is a core subject at school, which students must study at GCSE level. Studying English Language will help them to develop valuable life skills which will support their progress in college, university and in the world of work, regardless of what subject areas they wish to pursue in the future.

An array of skills are taught through our English curriculum, allowing them to develop their written and spoken communication skills, which will be of benefit to students for the rest of their lives. Essentially, whenever you need to persuade, inform or connect with someone, English is your best friend.

What will I study?

Across the English Language components, students will study the following reading: critical reading and comprehension; summary and synthesis; evaluation of a writer's choice of vocabulary; text type; grammar and structure; comparing texts.

They will study the following in writing: producing clear and coherent texts and writing for impact.

As well as this, the course also includes spoken language assessment. Students will perform a formal presentation to present new ideas; to respond to spoken language and to express ideas using Standard English.



Assessment format

Component 1 Written paper 40%: 1 hour 45 minutes

20th Century Literature Reading and Creative Prose Writing

Section A (20%) Reading: One prose extract with a range of structured questions

Section B (20%) Prose Writing – One creative writing task from a selection of titles

Component 2 Written Paper 60%: 2 hours

19th and 21st Century Non-Fiction

Reading and Transactional/Persuasive Writing

Section A (30%) Reading: Two extracts with a range of structured questions

Section B (30%) Writing: Two compulsory Transactional/Persuasive Writing tasks

Component 3 Spoken Language – Non-exam Assessment – unweighted

One presentation/speech, including responses to questions and feedback

Achievement in Spoken Language will be reported as part of the qualification, but it will not form part of the final mark and grade.

Did you know?

An average person knows about 20,000-35,000 English words.



100% Examination

Where next?

English can lead directly to careers such as: journalism, teaching, law, advertising, business, marketing, creative industries and many more!

GCSE English Literature

Exam Board: EDUQAS

Studying English Literature allows students to delve into a world of books and immerse themselves into different time periods and settings.

As well as enjoying a range of texts, students of English Literature will sharpen their analytical skills. Students will be asked to explore themes, make connections across texts, theories and historical events, challenging them to handle complex ideas and to search for patterns and interpret information in a wider context.

Students will develop their planning and research skills as well as gain knowledge of history, culture and even human behaviour.



What will I study?

Across the English Literature components, students will study: a Shakespeare play, an anthology of poems, a post-1914 drama text, a 19th century novel and unseen poetry.

They will learn: how to analyse the way writers have created meanings; how to show an understanding of the relationships between some of the texts and their contexts and how to compare poems.

Assessment format

Component 1 – 40% - Shakespeare and Poetry: Written paper 2 hours

Section A: (20%) Shakespeare – Romeo and Juliet
One extract question and one essay question based on the prescribed text.

Section B: (20%) Poetry from 1789 to the present day.

Two questions based on poems from the WJEC Eduqas Poetry Anthology, one of which involves comparison.

Component 2 - 60% - Post 1914 Prose/Drama, 19th Century Prose and Unseen Poetry: Written paper 2 hours 30 minutes

Section A: (20%) Post 1914 Prose/Drama: 'An Inspector Calls' – one source-based question.

Section B: (20%) 19th Century Prose: 'A Christmas Carol'
One source-based question.

Section C: (20%) Unseen Poetry from 20th/21st Century – Two questions on unseen poems, one is a comparison.

Did you know?

William Shakespeare invented hundreds of words and phrases that we still use today.



100% Examination

Where next?

Studying English Literature can lead to varied careers such as Teaching, Law and business, as well as professional writing roles such as a Digital Copywriter, Editorial Assistant or Journalist.

GCSE Mathematics

Exam Board: EDEXEL

All students start their GCSE course in Year 10, expanding further on what was taught at KS3. The GCSE Maths course covers a broad range of mathematical concepts.

A GCSE in maths is a valuable qualification that can open numerous career, college, and university progression possibilities. It is widely recognised as a key subject that reflects both strong problem-solving skills and logical thinking. By achieving a good grade in GCSE Maths, you will keep many doors open for both further education and career opportunities in fields such as engineering, technology, finance, and beyond.

What will I study?

Number Skills – Work with fractions, decimals, percentages, and standard form for accuracy.

Algebra – Solve equations, plot graphs, and model real-life problems.

Geometry and Measures – Study shapes, angles, area, volume, and transformations.

Statistics and Probability – Analyse data and calculate probabilities.

Ratios and Proportions – Solve scaling and proportion problems in real contexts.

Real-Life Applications – Apply maths skills to practical problems and everyday scenarios.



Assessment format

You will be assessed at the end of Year 11 through three equally weighted papers consisting of 80 marks each.

Paper one is a non-calculator paper and paper two and three are both calculator papers. There are two tiers available; Higher or foundation.

Did you know?

Markings on animal bones indicate that humans have been doing maths since around 30,000BC.



100% Examination

Where next?

Data Analyst, Engineer, Financial Analyst, Architect, Statistician, Accountant, Computer Programmer, Economist, Cryptographer

GCSE Science (Trilogy)

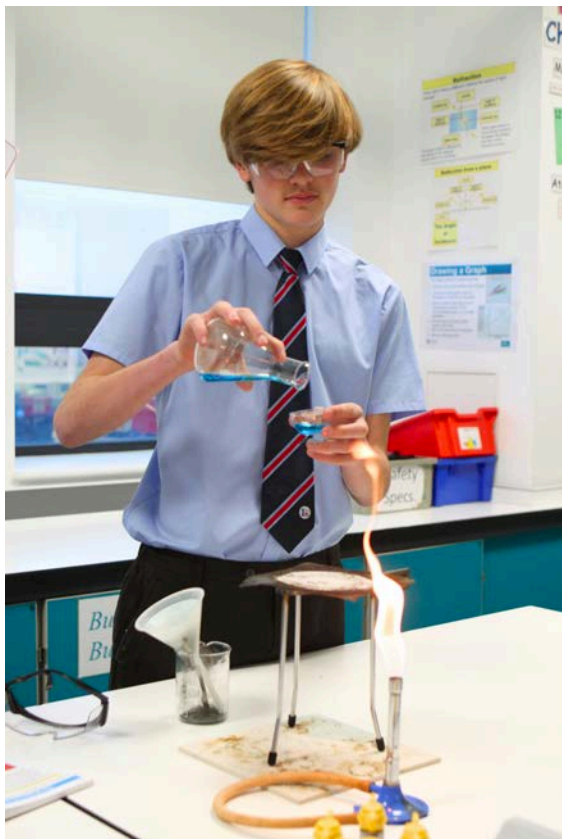
Exam Board: AQA

Combined Science is a core subject at GCSE, where students earn two GCSE grades by studying biology, chemistry, and physics.

The course covers a wide range of topics, including cell biology, chemical reactions, forces, and energy, offering a well-rounded understanding of science.

Students will take part in hands-on experiments to build practical skills and bring scientific ideas to life. Along the way, they'll develop problem-solving, analytical, and critical thinking skills.

This course lays the groundwork for further study, careers in STEM, or simply understanding the science behind everyday life, making it an engaging and valuable qualification.



What will I study?

Biology topics

- Cell biology
- Organisation (human body systems)
- Infection and response
- Bioenergetics
- Homeostasis and response
- Inheritance, variation, and evolution
- Ecology

Chemistry

- Atomic structure and the periodic table
- Bonding, structure, and the properties of matter
- Quantitative chemistry
- Chemical changes
- Energy changes
- The rate and extent of chemical change
- Organic chemistry
- Chemical analysis
- Chemistry of the atmosphere
- Using resources

Physics

- Energy
- Electricity
- Particle model of matter
- Atomic structure
- Forces
- Waves
- Magnetism and electromagnetism

Assessment format

At the end of year 11 those students undertaking the Combined Trilogy Science course will sit a total of six 1 hour 15 min examinations across the three science disciplines (Physics, Chemistry and Biology) equating to two science GCSEs.

Did you know?

The human body replaces itself with a new set of cells every seven to ten years. That means the average age of one of your cells is just seven years old!



100% Examination

Where next?

Medicine, Engineering, forensics, Astronomy, Physiotherapy, Teaching, Environmental Health, Medical Researcher

GCSE Art and Design

Exam Board: AQA

GCSE Art and Design provides an opportunity for students to develop their art skills and experience new and exciting techniques such as silk painting, oil painting, printmaking and textile design.

What will I study?

You will explore a variety of art techniques through two primary projects, with your teacher guiding you to enhance your skills during lessons. This approach helps you gain the confidence to choose the most suitable materials for creating a high-quality final piece for each project. Your final work could range from a detailed colour pencil drawing to different types of painting, such as watercolors, silk painting, or oils, or even a creative textile project. By offering students the freedom to select their materials, we find they take great enjoyment in producing unique and personalised portfolio pieces.

The use of sketchbooks is a vital part of the course for classwork and homework, which is set regularly. At the end of the course the work is celebrated in the school Art and Photography exhibition, this is a really positive event in which art and photography students are able to showcase their work for friends and family.



Assessment format

60% Non examined assessment

This is your portfolio of art work and your sketchbook that documents your progress including ideas, experimentation of media and plans for final pieces. This makes up your two main coursework projects.

40% Exam based

In year 11 you will complete a final project based on a question or theme set by the exam board. This will be very similar to your coursework projects in which you will create preparation and development work leading up to a final piece. The only difference is you will complete this final piece of work in ten hours independently.

There is a high level of commitment expected for this course, you may be required to attend study sessions after school at times and you must keep your sketchbook and portfolio work fully up to date. Art can be one of the most rewarding subjects to take and our students are always so proud of the work they create due to their efforts.

Did you know?

Creative industries in the UK are growing faster than the rest of the economy and they need creative people in these jobs.



60% Coursework
40% Exam project

Where next?

Architect, Art Therapist, Fashion Designer, Fine Artist, Graphic Designer, Hairdresser, Illustrator, Interior Designer, Make-up Artist, Photographer, Teacher, Web Designer, Textile Designer.

GCSE Business Studies

Exam Board: Edexcel

GCSE Business Studies offers students a comprehensive introduction to the world of business, providing essential skills that are valuable both in education and the workplace. Through exploring topics like marketing, finance, operations, and human resources, students gain practical knowledge of how businesses operate and thrive.

This course enhances problem-solving, critical thinking, and decision-making skills, preparing students for future roles in any sector.

Whether aspiring to run a business or simply understand how the economy works, GCSE Business lays a solid foundation for further studies or a career in business, entrepreneurship, or management. It is a well-rounded subject that equips students with the skills needed for the world of work.



What will I study?

Theme 1: **Investigating small business.**

Topic 1.1 Enterprise and entrepreneurship

Topic 1.2 Spotting a business opportunity

Topic 1.3 Putting a business idea into practice

Topic 1.4 Making the business effective

Topic 1.5 Understanding external influences on business.

Theme 2: **Building a Business.**

Topic 2.1 Growing the business

Topic 2.2 Making marketing decisions

Topic 2.3 Making operational decisions

Topic 2.4 Making financial decisions

Topic 2.5 Making human resource decisions

Assessment format

This course is assessed by two written exams 50% each.

Exams sat at the end of year 11. The exams are assessed through extended writing, with each exam lasting 1 hour and 45 minutes.

Did you know?

Starbucks, which is one of the biggest businesses in the world was started by three college students in 1971.



100% Examination

Where next?

Entrepreneur, Business Manager, Business Analyst, Digital Marketing, Financial Analyst, Project Manager, Operations Manager, Public Relations Specialist, Customer Service, Events Management

BTEC Child Development

Exam Board: Pearson Edexcel

This is a BTEC course designed to look at the growth and development of young children. The early years sector focuses on the learning, development and care of children in the UK.

This course is ideal for students who are interested in careers working with children from roles such as childminders and nannies to nurseries, crèches and preschool staff.

Knowledge of child development is important in a variety of other occupations outside of childcare and teaching, for example, in healthcare roles such as paediatricians, psychologists, occupational therapists, and speech and language therapists.

What will I study?

The BTEC Child Development course focuses on understanding how children grow, develop, and learn. It examines the principles of growth and development, as well as the factors that influence children's overall development. Students learn about the importance of play and how it supports learning and development.

The course emphasises adapting activities to meet the individual needs of children, promoting inclusion, and ensuring safe environments. Learners develop the ability to apply knowledge to create tailored activities that support development while addressing potential risks and hazards. They also explore how to connect different areas of development with children's specific needs to optimise learning and growth.

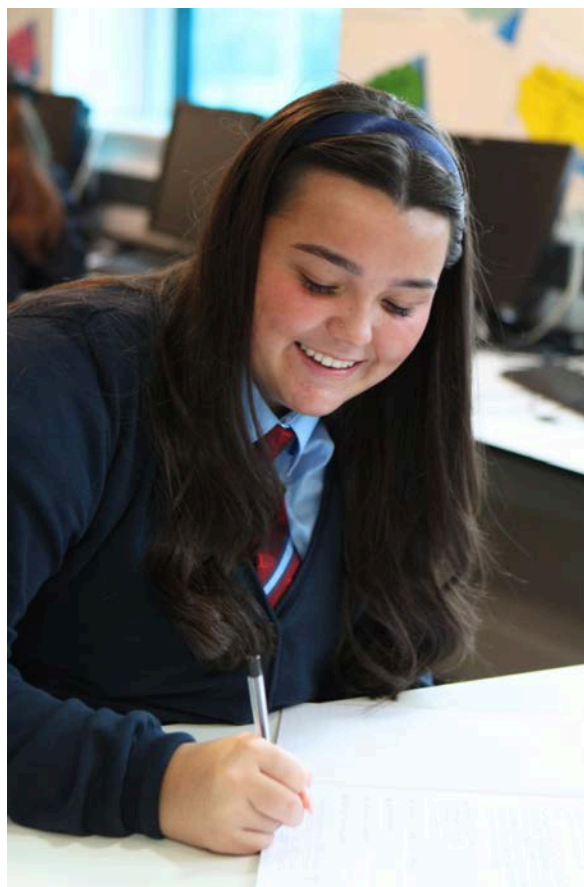
Assessment format

The course is divided into three components. Two are assessment based and one is an external examination.

Component 1 – Internal assessments completed between January and May (Year 10)

Component 2 – Internal assessments completed between September and December (Year 11)

Component 3 – External Assessment (2 Hours) completed May (Year 11)



Did you know?

Children's brains develop rapidly in the early years, with about 90% of brain development occurring by age five.



60% Coursework
40% Exam

Where next?

Childminders, Nannies, Nursery Nurses, Teachers, Paediatricians, Psychologists, Occupational Therapists, and Speech and Language therapists.

GCSE Computer Science

Exam Board: OCR

Computer Science is an exciting and challenging subject that seeks to develop skills regarded essential for the 21st century. Studying Computer Science will allow you to develop skills to think logically, algorithmically and recursively to analyse problems and devise ways to solve them.

The course is also designed to give you in depth understanding of how a computer works and what goes on 'behind the scenes'. While not primarily a math course, Computer Science requires some mathematical thinking, especially in areas like logic, binary operations, and algorithm efficiency.

A solid understanding of mathematics is beneficial.



What will I study?

Unit 1 – Exam (Principles of Computer Science) Unit 1 is a written exam that lasts for 90 minutes and is worth 50% of the total qualification. In the exam students will be questioned on; Hardware/Software, Data Representation, Encryption, Compression, Relational Databases and Algorithms. The Computer Science qualification teaches students how computers, software and the Internet work. The questions are multiple choice and short answers.

Unit 2 - Exam (Application of Computational Thinking). Unit 2 is a written exam that lasts for 90 minutes and is worth 50% of the total qualification. In the exam, students will be questioned on; Hardware/Software, Data Representation, Encryption, Compression, Relational Databases and Algorithms. The Computer Science qualification teaches students how computers, software and the internet work. This exam requires students to develop answers and apply their knowledge to different scenarios.

Unit 3 – Project (Python program, algorithm and testing) Unit 3 is a controlled assessment task that is no longer formally assessed but is an essential part of the qualification. Students will learn about the Python programming language and how to write computer programs. The controlled assessment requires students to; diagnose a problem, create algorithms, write a program and test their solution.

Assessment format

Students will complete a controlled assessment taking up to 20 hours to complete. This course is assessed by two written exams 50% each. Exams sat at the end of year 11.

Did you know?

90% of the world's data was created in the last two years. The exponential growth of social media, cloud computing, and the internet of things has led to an explosion of data creation.



100% Examination

Where next?

Software Developer, Data Scientist, Cybersecurity Analyst, AI Engineer, Web Developer, IT Consultant, Game Developer, Network Administrator, Database Administrator, Cloud Solutions Architect.

GCSE Design and Technology

Exam Board: AQA

Design and Technology is an exciting, creative and challenging subject which builds a bridge between academic learning and its usefulness and relevance to the world.

This course is aimed at students who have a passion for designing and making products from a variety of materials, including resistant materials, textiles, electronic components, card and paper.

Students will use a wide range of tools and equipment to convert ideas solving real life problems using raw materials and making them into products, for example: Furniture, clothes, toys, jewellery, games, packaging etc.

What will I study?

Communicate ideas through sketching and practical making skills. Use creative and imaginative thinking to solve problems. You need to have a keen interest in working with different materials. You will need to show initiative and have a commitment to completing projects to the highest standard.

The course includes the Dyson project, "I'm an Engineer, get me out of here".

Previous educational trips included Heysham Nuclear Power station, Grand Designs NEC, Jaguar Landrover.

Assessment format

The GCSE is split in two sections:

EXAM- Written exam: 2 hours (50% of GCSE final grade)

- Core technical principles
- Specialist technical principles
- Designing and making principles

COURSEWORK -Non-exam assessment (NEA): 30–35 hours approx. (50% of GCSE final grade)

Practical application of:

- Core technical principles
- Specialist technical principles
- Designing and making principles



Did you know?

In 1971, the iconic Nike logo was designed by a student named Carolyn Davidson for just \$35!



50% Examination
50% Coursework

Where next?

Construction, Plumber, Electrician, Engineer, motor vehicle – technology and repair, Product Designer, Theatre Set Carpenter, Service Technician, Civil Engineering, Technician, Engineering Model Maker

GCSE Geography

Exam Board: EDUQAS

The GCSE Geography course aims to inspire, motivate and challenge students and enhance their knowledge and understanding of the rapidly changing world in which they live. The physical, environmental and human aspects of the subject and the linkages that exist between them are studied.

The course follows a linear structure and consists of the following three components:

Theme 1: Changing Places – Changing Economies.

Theme 2: Changing Environments.

Theme 3: Environmental Challenges.

What will I study?

You will study physical geography, including landscapes, ecosystems, and climate, as well as human geography, covering topics such as urbanisation, population, and global development. You will also examine the challenges posed by natural hazards, resource management, and sustainable development. The course emphasises geographical skills, such as data analysis, map reading, and fieldwork, enabling you to develop critical thinking and problem-solving abilities. By the end of the course, you will have a deeper understanding of the connections of people and the environment, and how geography shapes the world we live in.

Students will participate in at least two out of school fieldwork visits at two contrasting environments (Human and Physical). In the past students have completed local fieldwork in Liverpool, Formby, New Brighton and Litherland.



Assessment format

Component 1: Investigating Geographical Issues (40%).

A written examination of 1 hour 45 minutes. Three structured data response questions assessing each of the three themes.

Component 2: Problem Solving Geography (30%).

A written examination of 1 hour 30 minutes. Assesses all three themes using structured data response questions based around a geographical issue.

Component 3: Applied Fieldwork Enquiry (30%).

A written examination of 1 hour 30 minutes. This assesses knowledge, understanding, geographical skills and application of fieldwork.

Did you know?

Antartica is the world's largest desert as it doesn't get that much rainfall.



100% Examination

Where next?

Law, Civil Services; environment agency; Police; Teaching; Accountancy; Journalism; Social Work; Research; Surveying; Cartography; Armed Services; Planning; Architecture; Travel; Tourism.

BTEC Health and Social Care

Exam Board: Pearson Edexcel

The BTEC Edexcel Level 1/2 in Health and Social Care is a vocational qualification tailored for students aspiring to work in the health and social care sectors. It offers a blend of practical learning and theoretical understanding, making it ideal for those seeking careers in nursing, social work, healthcare support, or related fields.

This course is designed to provide students with the skills, knowledge, and confidence to progress to further education or enter the workforce in entry-level roles.

What will I study?

The curriculum covers essential topics such as human lifespan development, which focuses on the physical, intellectual, emotional, and social development of individuals across life stages. Students also study health and well-being, learning how to assess and promote a healthy lifestyle.

The course also emphasises the importance of understanding diverse needs, ethical responsibilities, and working within professional boundaries.

By completing this qualification, students gain a solid foundation for progressing to higher-level courses, such as Level 3 Health and Social Care, or stepping directly into the care sector. Ultimately, the BTEC Level 1/2 equips students with the tools to make a positive impact on individuals and communities.



Assessment format

The course consists of three components:

Component 1 (Internal Assessments)
Human Lifespan Development
30%

Component 2 (Internal Assessments)
Health and Social Care Services
30%

Component 3 (Examination)
Health and Wellbeing
40%

Did you know?

In the UK almost 5 million people work in the Health and Social care sector.



60% Coursework
40% Exam

Where next?

Midwifery, Nursing, Dental Team, Support Worker, Home Carer, Health Assistant, Health Care Worker, Nursery Nurse, Residential Care, Child, Families and Young Peoples' Services.

GCSE History

Exam Board: AQA

The AQA GCSE History course offers students the opportunity to study a broad range of historical periods, events, and themes, helping them develop critical thinking and analytical skills. The course is divided into four key components: Period Study, Thematic Study, Modern Depth Study, and British Depth Study.

Topics include the study of Elizabethan England, One thousand years of British medical history, The American wild west and the causes of World War Two. The course encourages students to explore historical sources, understand cause and effect, and make connections between different historical developments.

What will I study?

Students will study four key areas of history:

Health and the People, exploring Britain's medical advancements from 1000 AD to the present

The Making of America, covering westward expansion, conflicts with Native Americans, and lawlessness (1845-1895)

Conflict and Tension, examining the causes of WWII (1918-1939) and the roles of key figures like Hitler and Mussolini

Elizabethan England, analysing Elizabeth I's final years (c1568-1603) through political, social, and cultural events. This topic includes a historical site visit that enhances understanding of the Elizabethan period.



Assessment format

The course is 100% exam based, consisting of two exams.

Paper 1 - International paper, America 1840 1890 and Conflict and tension (2 hours)

Paper 2 – British paper, Britain: The Health and the people and Elizabethan England (2 hours)



Did you know?

During World War Two, British plastic surgeons were at the forefront of developing groundbreaking techniques to treat soldiers with severe facial injuries which is the basis of modern plastic surgery today.



100% Examination

Where next?

Further & Higher Education A level – History, Sociology, Politics, Psychology, Law, English. Degree: History, History of Art, English, Journalism, Law, Politics, Criminology, Forensics, Medicine.

WJEC Level 1/2 Technical Award in Hospitality and Catering.

Exam Board: Edexcel

Have you ever wondered what it takes to work in a top hotel or restaurant? Does food and discovering new flavours in the kitchen inspire you? Maybe you're interested in developing the skills you need to work front of house in a large hotel, or explore opportunities working abroad? If so, it's time to uncover your potential and find out more about this exciting qualification.

The 2 Year Hospitality and Catering Course offers a unique opportunity for students to find out more about the fourth largest industry in Britain. During the course students will have the opportunity to plan and cook a wide variety of dishes that would be suitable for the service industry.

What will I study?

The WJEC Hospitality and Catering course provides students with practical and theoretical knowledge in food production, service, and hospitality management. Students develop skills in food preparation, cooking techniques, nutrition, menu planning, and food safety.

The course emphasises customer service, business operations, and environmental sustainability within the hospitality industry. Students gain hands-on experience in a commercial kitchen, allowing them to enhance their culinary skills.



Assessment format

Assessment includes practical assignments, written exams, and coursework. Ideal for those pursuing careers in catering, chef roles, restaurant management, or further studies in hospitality or related fields.

The Vocational Award is split in two sections, Section 1 – External Examination. This is completed on a computer. There is no written examination. This is worth 40% of the final grade.

Section 2 – Internal Coursework. Students will plan and prepare dishes which could be sold in industry. This is worth 60% of the final grade, this is the most enjoyable part as students will have the opportunity to spend the day with their class teacher showing off their culinary skills in the food preparation area whilst they create a three course meal.

The opportunity to study an industry-based Food Safety Qualification will also be offered.

Did you know?

Did you know that hospitality is one of the oldest professions in the world? Dating back to ancient times, the concept of providing food, shelter, and care to travelers has been ingrained in human civilisation for millennia.



60% Coursework
40% Exam

Where next?

Food Industry, Product Development, Food Science, Armed Forces, Events Management, Front of House Operations, Airline Crew, Marketing, Food and Beverage Services and Teaching.

BTEC Level 1/Level 2 Tech Award in Music Practice

Exam Board: Pearson

The course is a BTEC Level 1/2 Tech Award in Music Practice. It is the equivalent qualification to a GCSE, and is aimed at everyone who wants to develop skills in performing, composing/ song-writing, and learn more about different genres of music.

What will I study?

Component 1: Exploring music products and styles – find out about more musical styles from rock and roll to grime, reggae to delta blues and the different types of music products, such as live performance, multi-track sound recording, music for media and original song-writing. This supported by a music trip in Year 10 to the British Music Experience and The Beatles Story, in Liverpool.

Component 2: Music skills development– you will develop your skills in two of three areas: performance, production or composition, complete a reflective practice diary (video and written), assess your own progress and create two music products e.g. live performance, remix, original song.

Component 3: Responding to a Commercial Music Brief. Learners are given a brief list of tracks and a choice of genres. Learners choose one track and one genre and produce either: a cover version of the track in the new genre, or an original composition using stylistic traits of the new genre, based on the track. An example would be producing a Britpop cover version of Dua Lipa 'Don't Start Now' on guitar, or remixing Bon Jovi's 'Livin' on a Prayer' as a techno track.



Assessment format

There are 3 controlled assessments which are a mixture of written and practical work. The majority of student work is assessed internally by the music department and then moderated by an external verifier. Component 3 is externally assessed.



Did you know?

The Stradivarius violin is the most expensive musical instrument in the world. It was sold for \$16 million in 2011.



100% Controlled
Assessments (coursework)

Where next?

Composer, Music Therapy, Music Teaching, Studio Management, Artist Management, Publishing, Sound Engineer.

BTEC Level 1/Level 2 Tech Award in Performing Arts

Exam Board: Pearson

The BTEC Tech Award in Performing Arts is designed for students passionate about drama, dance, and the wider performing arts industry.

This vocational course combines practical performance work with theoretical understanding, helping you develop skills in creativity, teamwork, and professionalism. It offers a hands-on approach, with opportunities to explore real-world contexts and produce original performances.

What will I study?

The course covers three key components:

- **Exploring the Performing Arts:** Investigating different performance styles, practitioners, and roles within the industry.
- **Developing Skills and Techniques:** Building practical performance skills through workshops and rehearsals.
- **Responding to a Brief:** Creating and performing an original piece in response to a given scenario.

You will engage in projects such as scripted performances, devising theatre, and studying industry roles. Trips to live performances and local theatres may be organised to enrich learning and give you inspiration.

Assessment format

Your final grade is determined by coursework and an externally assessed project:

- **Component 1 (30%):** Internally assessed, focusing on exploring styles and practitioners.
- **Component 2 (30%):** Internally assessed, emphasising the development of skills and techniques.
- **Component 3 (40%):** Externally assessed, requiring you to create and perform a piece based on a set brief.

The course does not involve traditional exams but requires reflective logs, video evidence, and written evaluations.



Did you know?

In the UK almost 5 million people work in the Health and Social care sector.



100% Examination

Where next?

Actor, Theatre Director, Choreographer, Stage Manager, Lighting Designer, Sound Technician, Costume Designer, Playwright, Set Designer, Drama Teacher, Musician, Casting Director, Production Manager,

GCSE Photography

Exam Board: AQA

GCSE photography introduces students to the use of digital SLR cameras and Photoshop to create and edit images.

What will I study?

You will be taught how to use the main functions of a digital SLR camera so that you can produce a high standard of images. You will produce images for the following projects; landscape, cityscape, portraiture and close up photography.

Along with the producing of images with a camera, you will be required to keep a detailed log of your creative journey in a file. This includes planning for photo shoots, researching other photographers and explaining how you have edited your images. This means that a large part of this course is spent working on a computer, either editing images or working on your evidence file.

There are also off site photography activities that take place during the course which you will be required to attend, this includes Formby Woods, Crosby Beach and Liverpool City Centre.



Assessment format

60% Non examined assessment

This is your portfolio of images and your file work that demonstrates your progress including ideas, plans, test shots and final images. This makes up your four main coursework projects.

40% Exam based

In year 11 you will complete a final project based on a question or theme set by the exam board. This will be very similar to your coursework project, the only difference is you will complete a photo shoot and editing in ten hours. This work during the 10 hours is independent work so you can demonstrate the skills you have learned on the course.

During the course there will be a project on portraiture, you will need to work in pairs and produce photographs of each other for this. Those photographs are to help you learn techniques such as natural and studio lighting. However you do not need to be in any final images for the exhibition displays if you do not wish to.

This course is very popular and often oversubscribed. Places will be allocated based on your previous attitude to learning in the art department as this is an art based course.

There is a high level of commitment expected for this course, you may be required to attend photo shoots and study sessions after school at times.

Did you know?

The word Photography actually means "Painting with light"?



60% Coursework
40% Exam project

Where next?

Careers in Photography may include sports, portrait, Wedding, Fashion and Marketing Photography. Photography skills also transfer to many other design jobs too.

GCSE Religious Studies

Exam Board: AQA

The Religious Studies course encourages students to explore religious perspectives and ethical issues, focusing on beliefs, practices, and religion's societal impact. Students develop critical thinking, empathy, and debating skills while examining questions like:

- Can war ever be justified?
- Should countries use weapons of mass destruction?
- How should lawbreakers be treated?
- Should the death penalty be used?
- When is abortion acceptable?
- What ethical issues surround euthanasia?
- How does religion influence LGBTQ+ rights and treatment?



What will I study?

Component 1 – Religions

- Christianity: Topics include beliefs about God, creation, the afterlife, and Jesus, alongside practices such as worship, festivals, and the Church's societal role.
- Islam: Covers beliefs about Allah, prophets, the afterlife, and the Five Pillars, as well as practices like prayer, fasting, and pilgrimage.

Component 2 – Philosophical and Ethical Themes

- Relationships and Families: Explores marriage, divorce, family, gender roles, contraception, and equality.
- Religion and Life: Examines origins of the universe, abortion, euthanasia, and animal rights.
- Peace and Conflict: Discusses war, terrorism, pacifism, and just war theory.
- Crime and Punishment: Focuses on justice, punishment, the death penalty, and rehabilitation.

Assessment format

You will sit two exams at the end of year 11, each lasting 1 hour 45 minutes. Each exam is worth 50% of your final grade.

You will have one set of questions per topic, each following the same structure and question types which supports pupils with developing exam technique.

Paper 1 – Religions (Christianity and Islam).

Paper 2 – Philosophical and Ethical Themes (Relationships and Families, Ideas about Life, Peace and Conflict, Crime and Punishment).

Did you know?

In Udwada, Gujarat, the "Iranshah" fire has burned since 721, using ashes brought by Persian refugees, symbolising their sacred connection to Iran.



100% Examination

Where next?

Teacher, Chaplain, Journalist, Social Worker, Charity Worker, Counsellor, Civil Service Officer, Community Development Worker, Museum Curator, Mediator.

GCSE Separate Sciences

Exam Board: AQA

Students who choose to study separate science will study the three sciences in much greater detail than the core science. Students will achieve three separate GCSE grades for biology, chemistry and physics in comparison to the combined course in which students achieve two GCSEs from a combination of their results.

This course is ideal for students who are highly confident in their science abilities and would like to continue studying any of the sciences after leaving school. Students studying separate sciences will have an increased amount of science lessons in comparison to core combined science.



What will I study?

Biology topics

- Cell biology
- Organisation (human body systems)
- Infection and response
- Bioenergetics
- Homeostasis and response
- Inheritance, variation, and evolution
- Ecology

Chemistry

- Atomic structure and the periodic table
- Bonding, structure, and the properties of matter
- Quantitative chemistry
- Chemical changes
- Energy changes
- The rate and extent of chemical change
- Organic chemistry
- Chemical analysis
- Chemistry of the atmosphere
- Using resources

Physics

- Energy
- Electricity
- Particle model of matter
- Atomic structure
- Forces
- Waves
- Magnetism and electromagnetism
- Space physics (exclusive to separate sciences)

Assessment format

At the end of year 11 those students undertaking separate sciences will sit a total of six 1 hour 45 min examinations across the three science disciplines. Two examinations in each relevant science area make up the grade for each individual science subject.

Did you know?

If you took all the empty space out of our atoms, you could fit the entire human race into the size of a sugar cube.



100% Examination

Where next?

Doctor, Nurse, Physiotherapist, Pharmacist, Surgeon, Dentist, Veterinarian, Anaesthetist, Optician, Astronomer, Teacher, Midwife

GCSE Spanish

Exam Board: Pearson Edexcel

Speaking another language is both rewarding and extremely useful, as well as being a highly valued skill by future employers. Our 2-year GCSE course will extend students' knowledge of a range of vocabulary and grammatical concepts in Spanish, to allow them to develop confidence in their Spanish language skills and use their language competently to express their own ideas and opinions.

The course content follows the National Curriculum and to give our GCSE students the best opportunity to practise their skills in context, we have successfully offered an overseas trip to a number of students for the last 3 years.

What will I study?

Students will study 8 modules in total enabling them to understand and give information and opinions about a variety of topics including:

- Family, relationships and identity
- Healthy lifestyles and wellbeing
- My neighbourhood and Spanish-speaking countries
- Technology and free time
- School studies
- Jobs and future plans
- Environment and supporting my community
- Holidays and festivals

The skills acquired studying a second language will enable learners to communicate effectively in any Spanish-speaking country, whilst developing their soft-skills (listening/speaking) which promotes literacy in both Spanish and English. Students will become proficient in 4 elements of the language: Speaking, Listening, Reading and Writing.



Assessment format

Foundation or Higher tier available

4 final exams in Y11 Listening, Speaking, Reading, Writing (25% each)

Homework (vocab tests) is set weekly to reinforce the language that has been learned in the classroom and throughout the GCSE.

Learners will be expected to know 1,200 lexical items for foundation tier or 1,700 for higher tier. The majority of these words will be based on the 2000 most frequent words in Spanish.

Attendance to weekly study support sessions after school is expected to enable 1-1 speaking practice in preparation for the speaking exam.

Did you know?

Spanish is the second most studied language in the world.



100% Examination

Where next?

Translator, Interpreter, Language teacher, Linguist, Journalist, Content writer, Foreign service officer, Tour guide, Subtitler, Lawyer, Sports industry

Sport and Coaching

Level 1/2 Vocational Award

Exam Board: WJEC

The WJEC Level 2 Award in Sports and Coaching provides students with the foundational knowledge and practical skills needed for a career in sports coaching or related fields.

This qualification focuses on key areas such as planning, delivering, and evaluating coaching sessions, understanding the principles of fitness and training, and exploring the roles and responsibilities of a coach. It emphasises hands-on learning, enabling students to apply theory to practice in real-world settings.

The course is ideal for those passionate about sports and looking to progress into further education, apprenticeships, or employment within the sports, health, and fitness industries.



What will I study?

The course consists of three engaging modules designed to enhance your knowledge and understanding of PE and sport:

Unit 1 – Fitness for Sport (Exam)

Learn how the body adapts to exercise, how training improves fitness, and how to plan effective training programmes. This unit equips you with the skills to design fitness plans tailored to individual needs.

Unit 2 – Improving Sporting Performance

Discover how to analyse performance, identify strengths and weaknesses, and create improvement plans. This unit helps you develop the ability to enhance sporting abilities effectively.

Unit 3 – Coaching Principles

Gain practical knowledge about planning, leading, and evaluating sports activities. Develop leadership skills and qualities while learning to deliver and review sports sessions, taking your first step into sports coaching.

Assessment format

Unit 1: Fitness for Sport

Written Examination: 1 hour 20 minutes
40% of total qualification

Unit 2: Improving Sporting Performance

Controlled assessment: approximately 4 hours
25% of total qualification

Unit 3: Coaching Principles

Controlled assessment: approximately 6 hours
35% of total qualification

Did you know?

Sport and physical activity contribute £39 billion to the UK's economy every year.



60% Coursework
40% Exam

Where next?

Sports coach, Fitness Instructor, PE Teacher, Youth Sports Leader, Recreation Assistant, Personal Trainer, Community Sports Coordinator, Activity Leader.

**If you need any further information,
please see the following Heads of
Departments and members of staff:**

Art and Design	Miss Bell
Business Studies.	Miss Heath
Child Development	Mrs Williams
Computer Science	Miss Heath
Design and Technology	Mr Glover
English	Mrs Lowe
Geography	Mr Dunn
Health and Social Care	Mrs Williams
History	Miss Sainsbury
Hospitality and Catering	Miss Mason
Maths	Mrs Smith
Music	Miss Barker
Performing Arts	Miss Cusack
Photography	Miss Bell
Religious Studies	Miss Pothiwala
Science	Mr Barrett
Spanish	Miss Newton
Sports and Coaching	Mrs Bennett







Iceland Trip - 2024